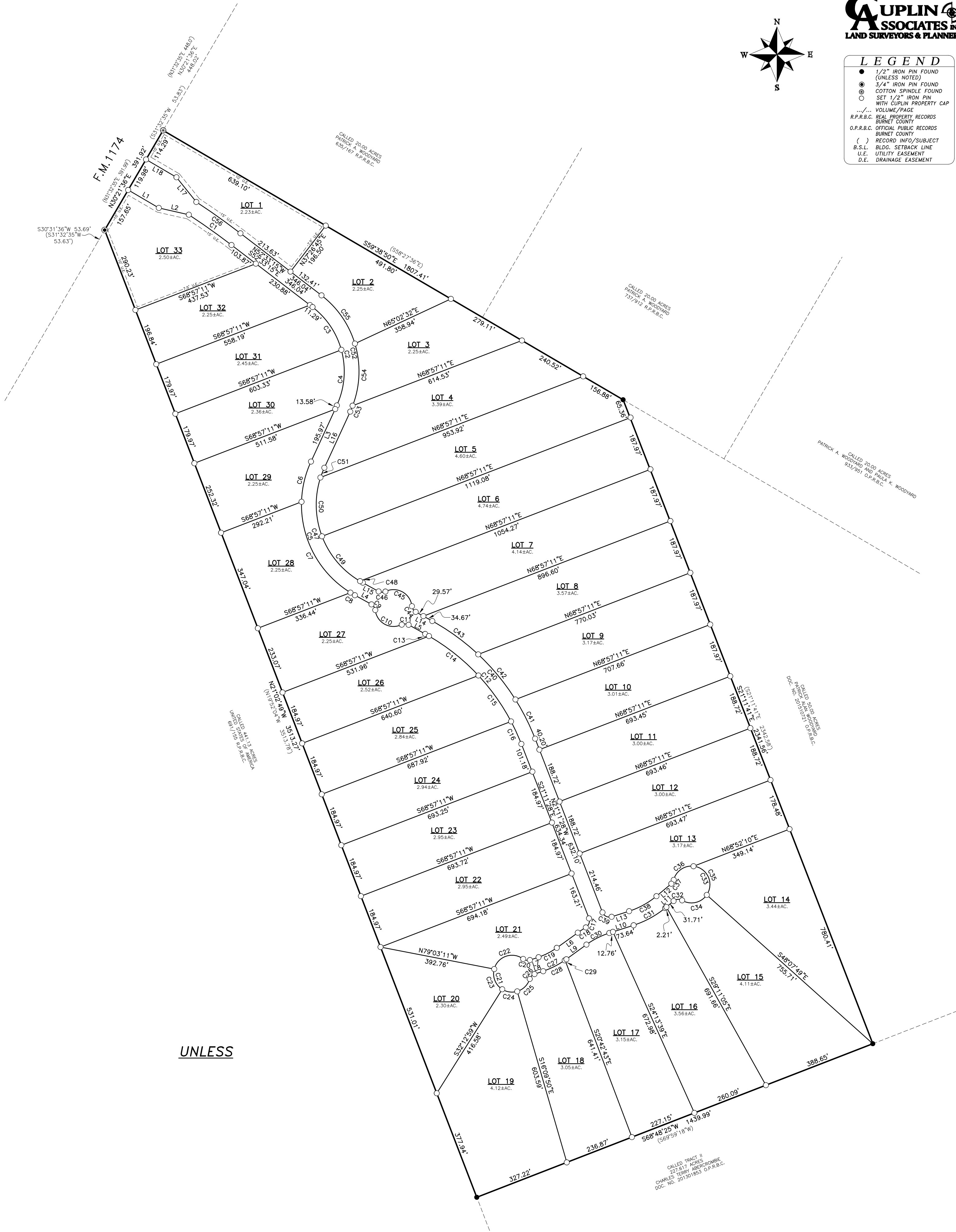


LEGEND

- 1/2" IRON PIN FOUND (UNLESS NOTED)
- ⊙ 3/4" IRON PIN FOUND
- ⊗ COTTON SPINDLE FOUND
- SET 1/2" IRON PIN WITH CUPLIN PROPERTY CAP
- .../... VOLUME/PAGE
- R.P.R.B.C. REAL PROPERTY RECORDS BURNET COUNTY
- O.P.R.B.C. OFFICIAL PUBLIC RECORDS BURNET COUNTY
- () RECORD INFO/SUBJECT
- B.S.L. BLDG. SETBACK LINE
- U.E. UTILITY EASEMENT
- D.E. DRAINAGE EASEMENT



UNLESS

STONE CREEK RANCH
104.66 ACRES OUT OF THE
JACOB ZINGULAR SURVEY, ABSTRACT NO. 1022, BURNET COUNTY, TEXAS

PROJ. NO. 201694
PREPARED FOR:
TECH: AMH / RPM
APPROVED: D. STARK
FIELDWORK PERFORMED ON:
COPYRIGHT: 2021

1500 OLLIE LANE
MARBLE FALLS, TX. 78654
PH. 325-388-3300/830-693-8815
WWW.CUPLINASSOCIATES.COM

SCALE 1" = 200'

2	
1	
DATE	NO. DESCRIPTION
REVISIONS	